

CATALOG  
TREAD DESIGNS  
CATÁLOGO  
DISEÑOS DE BANDAS

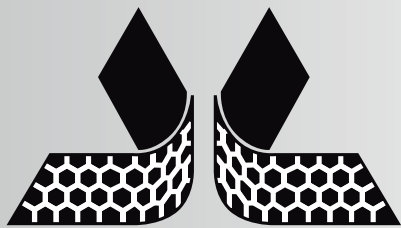
ISO 9001 - 2008

ENERO 2016  
JAN 2016



[www.hbplusbandamatic.com](http://www.hbplusbandamatic.com)





**H.B. plus BANDAMATIC**

RETREAD RUBBER

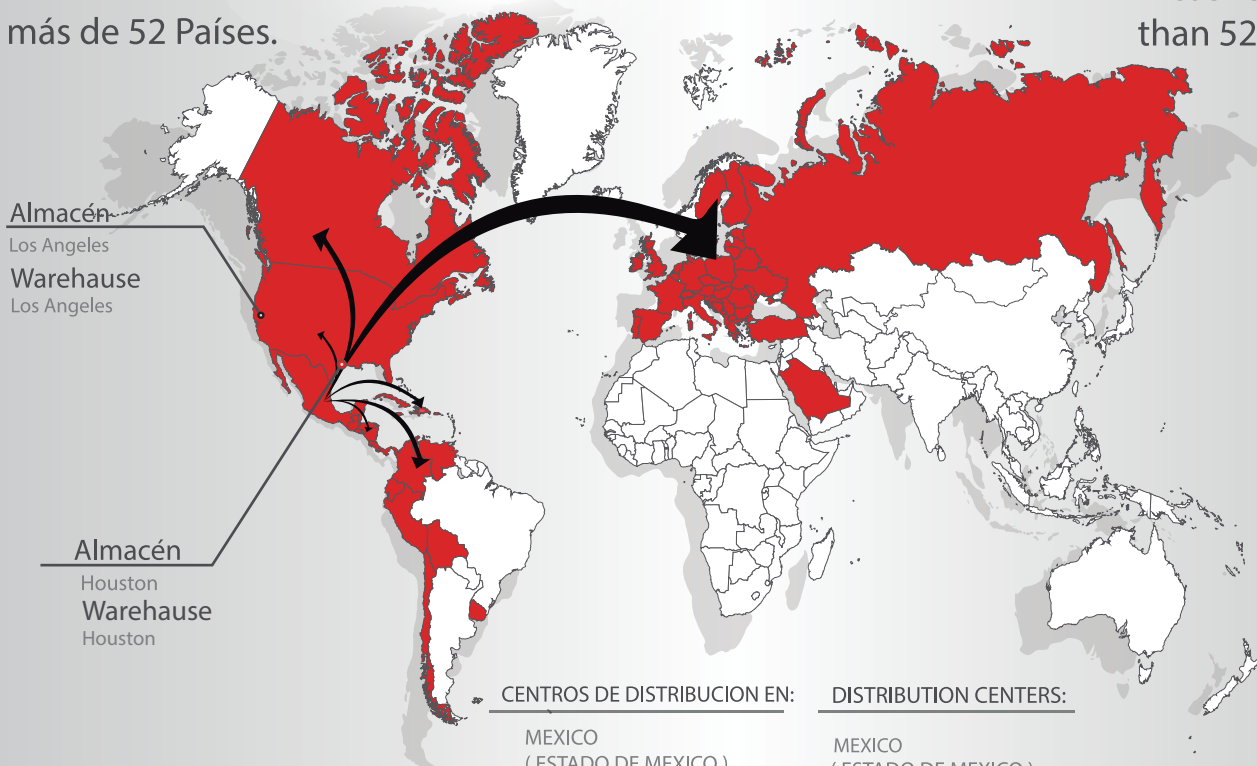


## H.B. plus BANDAMATIC

Tecnología que rueda por el mundo.  
Technology rolling over the world

Presencia en  
más de 52 Países.

Presence in more  
than 52 countries.



Almacén  
Los Angeles  
Warehouse  
Los Angeles

Almacén  
Houston  
Warehouse  
Houston

CENTROS DE DISTRIBUCION EN:

MEXICO  
( ESTADO DE MEXICO )  
USA ( LOS ANGELES  
HOUSTON )  
EUROPA ( BELGICA ).

DISTRIBUTION CENTERS:

MEXICO  
( ESTADO DE MEXICO )  
USA ( LOS ANGELES,  
HOUSTON )  
EUROPE ( BELGIUM )

## HBplusBANDAMATIC

We are a team of people committed to our work, where each product is carefully engineered to exceed the expectations of our customers.

Start saving immediately, contact us and an advisor will provide all the information required to select the kind of tread that best suits your needs.

Join the hundreds of customers in over 52 countries that reward us with their preference.

Be part of H.B. plus Bandamatic, *Technology rolling over the world*

## H.B.plus BANDAMATIC

Tecnología que rueda por el mundo.  
Technology rolling over the world

## HBplusBANDAMATIC

Somos un equipo comprometido con nuestro trabajo, donde cada producto es cuidadosamente fabricado para superar las expectativas de todos nuestros clientes.

Comience a ahorrar de inmediato, contáctanos y un asesor le brindará toda la información que se requiera para seleccionar el tipo de banda que más se adecúe a sus necesidades.

Forme parte de los cientos de clientes que en más de 52 países nos premian con su preferencia.

Sea parte de H.B. plus Bandamatic, *Tecnología que rueda por el mundo.*

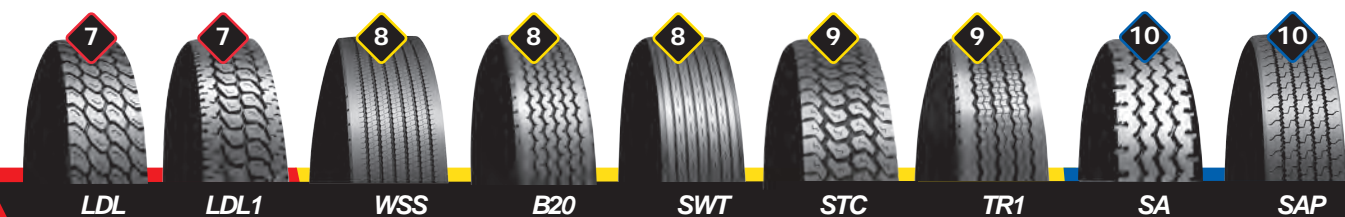
### CATALOG DESIGN FINDER TABLA PARA LOCALIZAR DISEÑOS EN CATÁLOGO

DESIGN	PAGE	DESIGN	PAGE	DESIGN	PAGE	DESIGN	PAGE	DESIGN	PAGE	DESIGN	PAGE
DISEÑO	PÁGINA	DISEÑO	PÁGINA	DISEÑO	PÁGINA	DISEÑO	PÁGINA	DISEÑO	PÁGINA	DISEÑO	PÁGINA
AS	19	BTR	1	GC1	21	MLZ	28	SA	10	WH	28
AT	14	BUB	20	GRIP	16	MT	6	SAM	10	WHR	21
ATL	14	BZU3	25	GT	18	MTM	7	SAP	10	WM	24
B20	8	CB	3	HS	1	MTM2	16	SLICK	31	WR	11
B43	23	CR	22	KAJ71	32	MTM3	17	SM	30	WT	24
B51	22	CROSS	27	LDL	7	NT2	15	SPIDER	5	WW	25
BAP	2	CROSS1	27	LDL1	7	OTR	31	STC	9	WSS	8
BAPM	11	DD	13	LDT	33	PR	18	SWT	8	ZA	20
BAR	23	DDE66	22	LL	27	RAP	3	TC	26	ZE	2
BCT	30	DDL	13	LL1	30	RAP-L	4	TR1	9	ZEM	12
BMM	12	DDM	13	LPD	26	RAPM	4	TRA	2	ZEM1	12
BR	17	DL	19	LT	26	RT	5	UHS	24	ZY2	25
BST	4	DL1	19	LW	11	S	20	UM	23		
BT	14	DY	18	MAP	3	S70	33	WB	28		
BT2	15	FRP	29	MC1	31	S71	32	WBL	29		
BTM	6	GAP	1	MDA	6	S72	32	WD	15		
BTM2	17	GC	21	ML	29	S76	33	WE	16		

■ Use first letter of design to locate product family and designated page number on catalog.

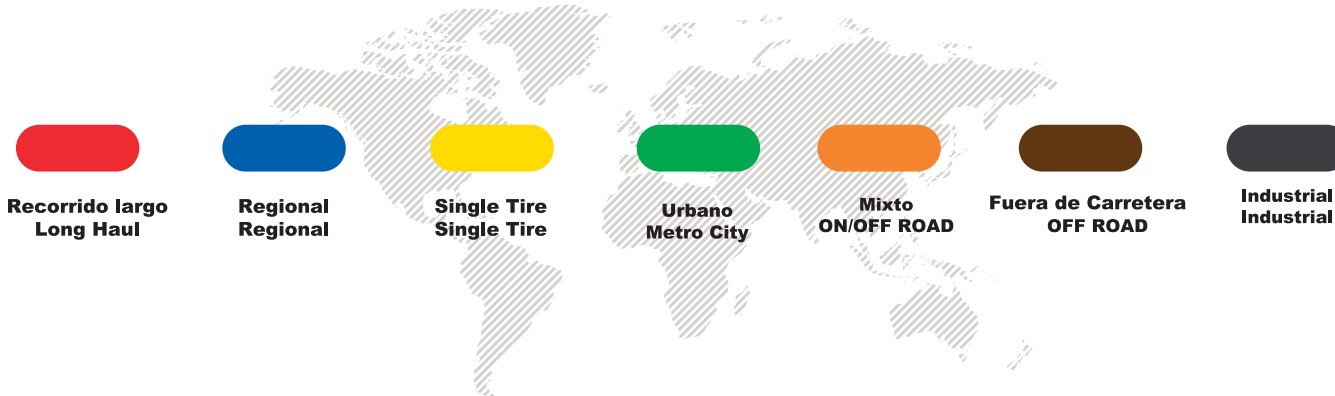
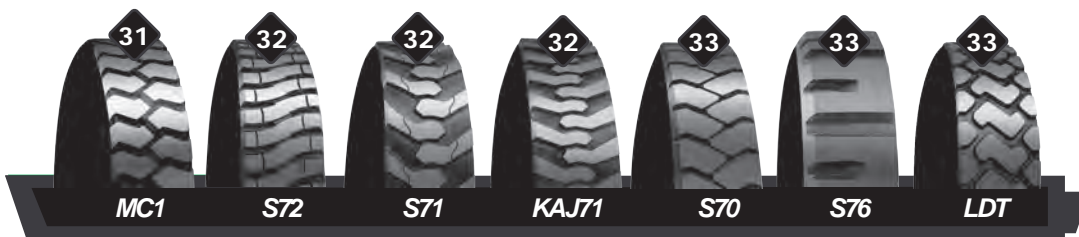
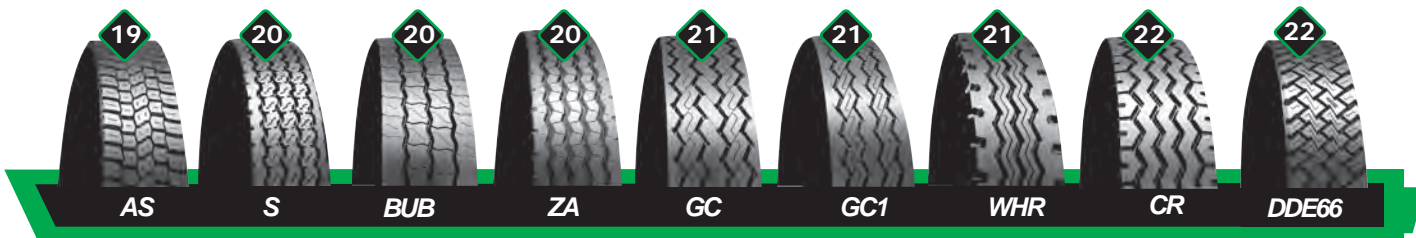
■ Utilizar la primera letra del diseño para localizar a la familia del producto e identifique el número de página en el catálogo.

# INDICE



Debido a la flexibilidad del hule, las dimensiones especificadas podrían sufrir pequeñas variaciones, las cuales no afectan el desempeño del producto.  
**HULES BANDA** se reserva el derecho de alterar las especificaciones sin previo aviso.

*Because of rubber characteristics, the specified dimension might suffer small variations, but not on it's performance.  
**HULES BANDA** reserves the right to change it's specifications without notice*



# Simbología Signage



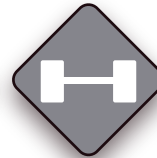
Ejes libres  
Free axle application



Toda posición  
All-position



Ejes de tracción  
Traction axle application



Single Tire



Recorrido largo  
Long haul



Regional  
Regional



Urbano  
Metro city



Mixto  
On / Off road



Mixto 60 Km/hr máxima  
On / Off road  
maximum 60 Km/hr



Fuera de carretera  
Off road



Industrial  
Industry



Lluvia  
Rain



Severo  
Severe



Nieve  
Snow



Banda para Arrastre  
Lateral Shearing  
Resistant



Ahorro de Combustible  
Fuel Saver



Intermodal  
Intermodal



Recorrido largo  
Long haul



Regional  
Regional



Single Tire  
Single Tire



Urbano  
Metro City



Mixto  
ON/OFF ROAD



Fuera de carretera  
OFF ROAD



Industrial  
Industrial

# RECORRIDO LARGO

# LONG HAUL



**HS**



## EJES LIBRES FOR FREE AXLE APPLICATION

CODE CODIGO	SIZE MEDIDA	mm		mm	
		mm	inch	mm	inch
70 HS 11L	6A	178	7	8.70	11/32
70 HS 11	6	178	7	8.70	11/32
75 HS 11	7	194	7 5/8	8.70	11/32
80 HS 11	8	203	8	8.70	11/32
85 HS 11	9	219	8 5/8	8.70	11/32

RADIAL / RADIAL • DIAGONAL / BIAS PLY



**BTR**



## EJES LIBRES FOR FREE AXLE APPLICATION

CODE CODIGO	SIZE MEDIDA	mm		mm	
		mm	inch	mm	inch
70 BTR 11	6	178	7	8.70	11/32

RADIAL / RADIAL • DIAGONAL / BIAS PLY



**GAP**



## EJES LIBRES FOR FREE AXLE APPLICATION

CODE CODIGO	SIZE MEDIDA	mm		mm	
		mm	inch	mm	inch
75 GAP 12	7	194	7 5/8	9.50	12/32
80 GAP 12	8	203	8	9.00	12/32
85 GAP 12	9	219	8 5/8	9.00	12/32
90 GAP 12	10	229	9	9.50	12/32

RADIAL / RADIAL

NOTA: EN CODIGOS SOMBREADOS CONSULTE A SU ASESOR

NOTE: IN COLORED CODES ASK YOUR ADVISOR

- RECOMENDADO
- ACEPTABLE
- LIMITADO

- RECOMMENDED
- ACCEPTABLE
- LIMITED

# RECORRIDO LARGO

# LONG HAUL



## EJES LIBRES FOR FREE AXLE APPLICATION

CODE CODIGO	SIZE MEDIDA	mm		mm	
		mm	inch	mm	inch
75 ZE 18	6	194	7 5/8	14.30	18/32
80 ZE 18	8	203	8	14.30	18/32
85 ZE 18	9	219	8 5/8	14.30	18/32
90 ZE 18	10	229	9	14.30	18/32
93 ZE 20	10.5	240	9 3/8	16.00	20/32
97 ZE 20	12	250	9 7/8	16.00	20/32

RADIAL / RADIAL



## EJES LIBRES FOR FREE AXLE APPLICATION

CODE CODIGO	SIZE MEDIDA	mm		mm	
		mm	inch	mm	inch
80 TRA 12	8	203	8	9.00	12/32
82 TRA 12	8.2	210	8 1/4	9.00	12/32
85 TRA 12	9	219	8 5/8	9.00	12/32
90 TRA 12	10	230	9	9.00	12/32

RADIAL / RADIAL • DIAGONAL / BIAS PLY



## EJES LIBRES FOR FREE AXLE APPLICATION

CODE CODIGO	SIZE MEDIDA	mm		mm	
		mm	inch	mm	inch
80 BAP 18	8	203	8	14.30	18/32
83 BAP 18	8.5	213	8 3/8	14.30	18/32

RADIAL / RADIAL • DIAGONAL / BIAS PLY

NOTA: EN CODIGOS SOMBREADOS CONSULTE A SU ASESOR

NOTE: IN COLORED CODES ASK YOUR ADVISOR

- RECOMENDADO
- ACEPTABLE
- LIMITADO

- RECOMMENDED
- ACCEPTABLE
- LIMITED



# RECORRIDO LARGO



# LONG HAUL



**MAP**



••••



**CB**



••••



**RAP**



••••



## EJES LIBRES FOR FREE AXLE APPLICATION

CODE CODIGO	SIZE MEDIDA	mm		mm		inch	
		mm	inch	mm	inch	mm	inch
90 MAP 18	10	229	9	14.30	18/32		

RADIAL / RADIAL

## EJES LIBRES FOR FREE AXLE APPLICATION

CODE CODIGO	SIZE MEDIDA	mm		mm		inch	
		mm	inch	mm	inch	mm	inch
70 CB 11	6B	178	7	8.70	11/32		
75 CB 11	7	194	7 5/8	8.70	11/32		
80 CB 11	8	203	8	8.70	11/32		
50 CB 14	1A	127	5	11.10	14/32		
56 CB 14	3.5A	146	5 3/4	11.10	14/32		
60 CB 14	4A	152	6	11.10	14/32		
70 CB 16	6A	178	7	12.70	16/32		
75 CB 16	7A	194	7 5/8	12.70	16/32		
80 CB 17	8A	203	8	13.50	17/32		
85 CB 17	9A	219	8 5/8	13.50	17/32		

RADIAL / RADIAL • DIAGONAL / BIAS PLY

## EJES LIBRES FOR FREE AXLE APPLICATION

CODE CODIGO	SIZE MEDIDA	mm		mm		inch	
		mm	inch	mm	inch	mm	inch
75 RAP 15	7	194	7 5/8	11.90	15/32		
80 RAP 15	8	203	8	12.00	15/32		
82 RAP 15	8.2	210	8 1/4	11.90	15/32		
85 RAP 15	9	219	8 5/8	11.90	15/32		
90 RAP 15	10	229	9	11.90	15/32		
92 RAP 15	10.5	235	9 1/4	11.90	15/32		
96 RAP 15	11	248	9 3/4	11.90	15/32		
100 RAP 15	12	254	10	11.90	15/32		
104 RAP 15	12.5	267	10 1/2	11.90	15/32		

RADIAL / RADIAL • DIAGONAL / BIAS PLY

NOTA: EN CODIGOS SOMBREADOS CONSULTE A SU ASESOR

NOTE: IN COLORED CODES ASK YOUR ADVISOR

- RECOMENDADO
- ACEPTABLE
- LIMITADO

- RECOMMENDED
- ACCEPTABLE
- LIMITED

# RECORRIDO LARGO

# LONG HAUL



**RPM**



••••



••••

•••

•••



••••



**RAP-L**



••••



••••

•••

•••



→

→



**BST**



••••



••••

•••

••



••••

•••

## EJES LIBRES FOR FREE AXLE APPLICATION

CODE CODIGO	SIZE MEDIDA	mm		mm	
		mm	inch	mm	inch
82 RAPM 15	8.2	210	8 1/4	11.90	15/32
85 RAPM 15	9	219	8 5/8	11.90	15/32
90 RAPM 15	10	229	9	11.90	15/32

RADIAL / RADIAL • DIAGONAL / BIAS PLY

## EJES LIBRES FOR FREE AXLE APPLICATION

CODE CODIGO	SIZE MEDIDA	mm		mm	
		mm	inch	mm	inch
70 RAP 11L1	6B	178	7	8.70	11/32
62 RAP 11L	4.2	159	6 1/4	8.70	11/32
75 RAP 11L	7	194	7 5/8	8.70	11/32
80 RAP 11L	8	203	8	8.70	11/32
82 RAP 11L	8.2	210	8 1/4	8.70	11/32
85 RAP 11L	9	219	8 5/8	8.70	11/32
90 RAP 11L	10	229	9	8.70	11/32
75 RAP 15L	7A	194	7 5/8	11.90	15/32
80 RAP 15L	8A	203	8	12.00	15/32
85 RAP 15L	9A	219	8 5/8	11.90	15/32

RADIAL / RADIAL • DIAGONAL / BIAS PLY

## EJES LIBRES FOR FREE AXLE APPLICATION

CODE CODIGO	SIZE MEDIDA	mm		mm	
		mm	inch	mm	inch
85 BST 16	9	219	8 5/8	12.50	16/32
90 BST 16	10	229	9	12.50	16/32

RADIAL / RADIAL

NOTA: EN CODIGOS SOMBREADOS CONSULTE A SU ASESOR

NOTE: IN COLORED CODES ASK YOUR ADVISOR

- RECOMENDADO
- ACEPTABLE
- LIMITADO

- RECOMMENDED
- ACCEPTABLE
- LIMITED

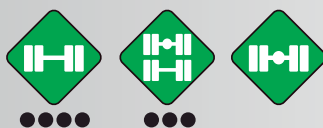
# RECORRIDO LARGO



# LONG HAUL



**SPIDER**



## EJES LIBRES Y DE TRACCION FOR DRIVE AND FREE AXLE APPLICATION

CODE CODIGO	SIZE MEDIDA	mm		mm	
		mm	inch	mm	inch
S82 SA 18	8.2	210	8 1/4	14.3	18/32
S85 SA 18	9	219	8 5/8	14.3	18/32
S90 SA 18	10	229	9	14.3	18/32



RADIAL / RADIAL



**RT**



## EJES DE TRACCION FOR DRIVE AXLE APPLICATION

CODE CODIGO	SIZE MEDIDA	mm		mm	
		mm	inch	mm	inch
84 RT 14	8.5	216	8 1/2	11.10	14/32
57 RT 18		150	5 7/8	14.30	18/32
62 RT 18	4.2	159	6 1/4	14.30	18/32
65 RT 18	5	168	6 5/8	14.30	18/32
75 RT 18	7	194	7 5/8	14.30	18/32
80 RT 18	8	203	8	14.30	18/32
82 RT 18	8.2	210	8 1/4	14.30	18/32
84 RT 18	8.5	215	8 4/8	14.30	18/32
85 RT 18	9	219	8 5/8	14.30	18/32
90 RT 18	10	229	9	14.30	18/32
92 RT 18	10.5	235	9 1/4	14.30	18/32
70 RT 22	6A	178	7	17.50	22/32
75 RT 22	7A	194	7 5/8	17.50	22/32
80 RT 22	8A	203	8	17.50	22/32
82 RT 22	8.2A	210	8 1/4	17.50	22/32
85 RT 22	9A	219	8 5/8	17.50	22/32
90 RT 22	10A	230	9	17.50	22/32
92 RT 22	10.5A	235	9 1/4	17.00	22/32
97 RT 22	12A	250	9 7/8	17.50	22/32

RADIAL / RADIAL • DIAGONAL / BIAS PLY

NOTA: EN CODIGOS SOMBREADOS CONSULTE A SU ASESOR

NOTE: IN COLORED CODES ASK YOUR ADVISOR

- RECOMENDADO
- ACEPTABLE
- LIMITADO

- RECOMMENDED
- ACCEPTABLE
- LIMITED



# RECORRIDO LARGO



# LONG HAUL



## EJES DE TRACCION FOR DRIVE AXLE APPLICATION

CODE CODIGO	SIZE MEDIDA	mm		mm	
		mm	inch	mm	inch
75 MT 18	7	194	7 5/8	14.30	18/32
80 MT 18	8	203	8	14.30	18/32
85 MT 18	9	219	8 5/8	14.30	18/32
90 MT 18	10	229	9	14.30	18/32
75 MT 22	7A	194	7 5/8	17.50	22/32
80 MT 22	8A	203	8	17.50	22/32
85 MT 22	9A	219	8 5/8	17.50	22/32

RADIAL / RADIAL



## EJES DE TRACCION FOR DRIVE AXLE APPLICATION

CODE CODIGO	SIZE MEDIDA	mm		mm	
		mm	inch	mm	inch
80 BTM 18	8	203	8	14.30	18/32
85 BTM 18	9	219	8 5/8	14.30	18/32
90 BTM 18	10	229	9	14.30	18/32
82 BTM 22	8.2B	210	8 1/4	17.50	22/32
85 BTM 22	9B	219	8 5/8	17.50	22/32
82 BTM 26	8.2A	210	8 1/4	20.60	26/32
85 BTM 26	9A	219	8 5/8	20.60	26/32

RADIAL / RADIAL



## EJES DE TRACCION FOR DRIVE AXLE APPLICATION

CODE CODIGO	SIZE MEDIDA	mm		mm	
		mm	inch	mm	inch
104 MDA 22	12.5	267	10 1/2	17.50	22/32

M+S

RADIAL / RADIAL

NOTA: EN CODIGOS SOMBREADOS CONSULTE A SU ASESOR

NOTE: IN COLORED CODES ASK YOUR ADVISOR

- RECOMENDADO
- ACEPTABLE
- LIMITADO

- RECOMMENDED
- ACCEPTABLE
- LIMITED

# RECORRIDO LARGO



# LONG HAUL



**MTM**



**LDL**



**LDL1**



- RECOMENDADO
- ACEPTABLE
- LIMITADO

## EJES DE TRACCION FOR DRIVE AXLE APPLICATION

CODE CODIGO	SIZE MEDIDA	mm		mm	
		mm	inch	mm	inch
100 MTM 23	12	254	10	18.30	23/32
104 MTM 23	12.5	267	10 1/2	18.30	23/32

RADIAL / RADIAL

## EJES DE TRACCION FOR DRIVE AXLE APPLICATION

CODE CODIGO	SIZE MEDIDA	mm		mm	
		mm	inch	mm	inch
85 LDL18	9	220	8 5/8	14.00	18/32

RADIAL / RADIAL

## EJES DE TRACCION FOR DRIVE AXLE APPLICATION

CODE CODIGO	SIZE MEDIDA	mm		mm	
		mm	inch	mm	inch
85 LDL1 18	9	219	8 5/8	14.00	18/32
90 LDL1 18	10	230	9	14.00	18/32

RADIAL / RADIAL

NOTA: EN CODIGOS SOMBREADOS CONSULTE A SU ASESOR

NOTE: IN COLORED CODES ASK YOUR ADVISOR

- RECOMMENDED
- ACCEPTABLE
- LIMITED

# SINGLE TIRE

# SINGLE TIRE



**WSS**



## SINGLE TIRE

CODE CODIGO	SIZE MEDIDA	mm		mm	
		mm	inch	mm	inch
152 WSS 16.5	15.2	387	15 1/4	13.50	16.5/32

RADIAL / RADIAL



**B20**



## SINGLE TIRE

CODE CODIGO	SIZE MEDIDA	mm		mm	
		mm	inch	mm	inch
112 B20 16.5	13.5	287	11 1/4	13.00	16.5/32
115 B20 16.5	13.8	295	11 5/8	13.00	16.5/32
152 B20 16.5	15.2	387	15 1/4	13.50	16.5/32

RADIAL / RADIAL



**SWT**



## SINGLE TIRE

CODE CODIGO	SIZE MEDIDA	mm		mm	
		mm	inch	mm	inch
124 SWT 16	14.5	320	12 1/2	13.00	16/32

RADIAL / RADIAL

NOTA: EN CODIGOS SOMBREADOS CONSULTE A SU ASESOR

NOTE: IN COLORED CODES ASK YOUR ADVISOR

- RECOMENDADO
- ACEPTABLE
- LIMITADO

- RECOMMENDED
- ACCEPTABLE
- LIMITED

# SINGLE TIRE



# SINGLE TIRE



**STC**



## SINGLE TIRE

CODE CODIGO	SIZE MEDIDA	mm		mm	
		mm	inch	mm	inch
115 STC 18	13.8	295	11 5/8	14.50	18/32



RADIAL / RADIAL



**TR1**



## SINGLE TIRE

CODE CODIGO	SIZE MEDIDA	mm		mm	
		mm	inch	mm	inch
112 TR1 18	13.5	285	11 1/4	14.00	18/32
115 TR1 18	13.8	295	11 5/8	14.00	18/32



RADIAL / RADIAL

NOTA: EN CODIGOS SOMBREADOS CONSULTE A SU ASESOR

NOTE: IN COLORED CODES ASK YOUR ADVISOR

- RECOMENDADO
- ACEPTABLE
- LIMITADO

- RECOMMENDED
- ACCEPTABLE
- LIMITED

# REGIONAL



# REGIONAL



- RECOMENDADO
- ACEPTABLE
- LIMITADO

NOTA: EN CODIGOS SOMBREADADOS CONSULTE A SU ASESOR

NOTE: IN COLORED CODES ASK YOUR ADVISOR

## EJES LIBRES

FOR FREE AXLE APPLICATION

CODE CODIGO	SIZE MEDIDA	mm		inch	
		mm	inch	mm	inch
85 SA 15	9A	219	8 5/8	11.90	15/32
90 SA 15	10A	229	9	11.90	15/32
85 SA1 18	9	219	8 5/8	14.30	18/32
75 SA 18	7	194	7 5/8	14.30	18/32
80 SA 18	8	203	8	14.30	18/32
82 SA 18	8.2	210	8 1/4	14.30	18/32
85 SA 18	9	219	8 5/8	14.30	18/32
90 SA 18	10	229	9	14.30	18/32
92 SA 18	10.5	235	9 1/4	14.30	18/32

RADIAL / RADIAL

## EJES LIBRES Y DE TRACCION

FOR DRIVE AND FREE AXLE APPLICATION

CODE CODIGO	SIZE MEDIDA	mm		inch	
		mm	inch	mm	inch
85 SAP 17.5	9	219	8 5/8	14.00	17.5/32
90 SAP 17.5	10	229	9	14.00	17.5/32
94 SAP 17.5	10.5	240	9 1/2	14.00	17.5/32
97 SAP 17.5	12	250	9 7/8	14.00	17.5/32
102 SAP 17.5	12.2	260	10 1/2	14.00	17.5/32

RADIAL / RADIAL • DIAGONAL / BIAS PLY

## EJES LIBRES Y DE TRACCION

FOR DRIVE AND FREE AXLE APPLICATION

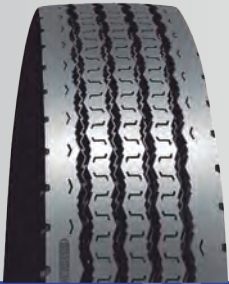
CODE CODIGO	SIZE MEDIDA	mm		inch	
		mm	inch	mm	inch
57 SAM 18	3.7	149	5 7/8	14.30	18/32
62 SAM 18	4.2	159	6 1/4	14.30	18/32
65 SAM 18	5	168	6 5/8	14.30	18/32
70 SAM 18	6	180	7	14.00	18/32
75 SAM 18	7	194	7 5/8	14.30	18/32
80 SAM 18	8	203	8	14.30	18/32
82 SAM 18	8.2	210	8 1/4	14.30	18/32
85 SAM 18	9	219	8 5/8	14.30	18/32
90 SAM 18	10	229	9	14.00	18/32
92 SAM 18	10.5	235	9 1/4	14.00	18/32
94 SAM 18	10.7	241	9 1/2	14.30	18/32
97 SAM 18	12	250	9 7/8	14.30	18/32
92 SAM 20	10.5A	235	9 1/4	15.90	20/32

RADIAL / RADIAL

- RECOMMENDED
- ACCEPTABLE
- LIMITED



# REGIONAL



**LW**



**WR**



**BAPM**



- RECOMENDADO
- ACEPTABLE
- LIMITADO

**NOTA:** EN CODIGOS **SOMBREADOS** CONSULTE A SU ASESOR

**NOTE:** IN **COLORED CODES** ASK YOUR ADVISOR

# REGIONAL

## EJES LIBRES FOR FREE AXLE APPLICATION

CODE CODIGO	SIZE MEDIDA	mm		inch	
		mm	inch	mm	inch
80 LW 22	8	203	8	17.50	22/32
82 LW 22	8.2	210	8 1/4	17.50	22/32
85 LW 22	9	219	8 5/8	17.50	22/32
90 LW 22	10	229	9	17.50	22/32
92 LW 22	10.5	235	9 1/4	17.50	22/32
94 LW 22	10.7	241	9 1/2	17.50	22/32
97 LW 22	12	250	9 7/8	17.50	22/32
104 LW 22	12.5	267	10 1/2	17.50	22/32

RADIAL / RADIAL • DIAGONAL / BIAS PLY

## EJES LIBRES FOR FREE AXLE APPLICATION

CODE CODIGO	SIZE MEDIDA	mm		inch	
		mm	inch	mm	inch
130 WR 16	15	330	13	12.70	16/32

RADIAL / RADIAL • DIAGONAL / BIAS PLY

## EJES LIBRES FOR FREE AXLE APPLICATION

CODE CODIGO	SIZE MEDIDA	mm		inch	
		mm	inch	mm	inch
75 BAPM 18	7	194	7 5/8	14.30	18/32
80 BAPM 18	8	203	8	14.30	18/32
85 BAPM 18	9	219	8 5/8	14.30	18/32
90 BAPM 18	10	229	9	14.30	18/32
92 BAPM 18	10.5	235	9 1/4	14.30	18/32

RADIAL / RADIAL • DIAGONAL / BIAS PLY

- RECOMMENDED
- ACCEPTABLE
- LIMITED

# REGIONAL



**ZEM**



**ZEM1**



**BMM**



# REGIONAL

## EJES LIBRES Y DE TRACCION FOR DRIVE AND FREE AXLE APPLICATION

CODE CODIGO	SIZE MEDIDA	mm		mm	
		mm	inch	mm	inch
70 ZEM 18	6	180	7	14.00	18/32
74 ZEM 18	6.5	190	7 1/2	14.50	18/32

RADIAL / RADIAL • DIAGONAL / BIAS PLY

## EJES LIBRES Y DE TRACCION FOR DRIVE AND FREE AXLE APPLICATION

CODE CODIGO	SIZE MEDIDA	mm		mm	
		mm	inch	mm	inch
85 ZEM1 20	9	219	8 5/8	16.00	20/32
90 ZEM1 20	10	230	9	16.00	20/32
94 ZEM1 20	10.5	240	9 3/8	16.00	20/32
97 ZEM1 20	12	250	9 7/8	16.00	20/32
102 ZEM1 20	12.2	260	10 1/4	16.00	20/32

RADIAL / RADIAL • DIAGONAL / BIAS PLY

## EJES DE TRACCION FOR DRIVE AXLE APPLICATION

CODE CODIGO	SIZE MEDIDA	mm		mm	
		mm	inch	mm	inch
80 BMM 19	8	203	8	15.10	19/32
85 BMM 19	9	219	8 5/8	15.10	19/32

RADIAL / RADIAL

NOTA: EN CODIGOS SOMBREADOS CONSULTE A SU ASESOR

NOTE: IN COLORED CODES ASK YOUR ADVISOR

- RECOMENDADO
- ACEPTABLE
- LIMITADO

- RECOMMENDED
- ACCEPTABLE
- LIMITED

# REGIONAL



# REGIONAL



## EJES DE TRACCION FOR DRIVE AXLE APPLICATION

CODE CODIGO	SIZE MEDIDA	mm		inch	
		mm	inch	mm	inch
70 DD 18	6	180	7	14.00	18/32
74 DD 18	6.5	190	7 1/2	14.50	18/32
94 DD 26	10.5	240	9 3/8	21.00	26/32
97 DD 26	12	250	9 7/8	21.00	26/32
102 DD 26	12.2	260	10 1/4	21.00	26/32

M+S

RADIAL / RADIAL



## EJES DE TRACCION FOR DRIVE AXLE APPLICATION

CODE CODIGO	SIZE MEDIDA	mm		inch	
		mm	inch	mm	inch
90 DDL 23	10	230	9	18.00	23/32
94 DDL 23	10.5	240	9 1/2	18.00	23/32
97 DDL 23	12	250	9 7/8	18.00	23/32
102 DDL 23	12.2	260	10 1/4	18.00	23/32
105 DDL 23	12.6	270	10 5/8	18.00	23/32

M+S

RADIAL / RADIAL



## EJES DE TRACCION FOR DRIVE AXLE APPLICATION

CODE CODIGO	SIZE MEDIDA	mm		inch	
		mm	inch	mm	inch
97 DDM 26	12	250	9 7/8	21.00	26/32

M+S

RADIAL / RADIAL

NOTA: EN CODIGOS SOMBREADOS CONSULTE A SU ASESOR

NOTE: IN COLORED CODES ASK YOUR ADVISOR

- RECOMENDADO
- ACEPTABLE
- LIMITADO

- RECOMMENDED
- ACCEPTABLE
- LIMITED

# REGIONAL



# REGIONAL



## EJES DE TRACCION FOR DRIVE AXLE APPLICATION

CODE CODIGO	SIZE MEDIDA	mm		mm	
		mm	inch	mm	inch
82 AT 28	8.2	210	8 1/4	22.00	28/32
85 AT 28	9	220	8 5/8	22.00	28/32
90 AT 28	10	230	9	22.00	28/32
94 AT 28	10.5	240	9 1/2	22.00	28/32
97 AT 28	12	250	9 7/8	22.00	28/32
102 AT 28	12.2	260	10 1/4	22.00	28/32

M+S

RADIAL / RADIAL



## EJES DE TRACCION FOR DRIVE AXLE APPLICATION

CODE CODIGO	SIZE MEDIDA	mm		mm	
		mm	inch	mm	inch
90 ATL 22	10	230	9	17.50	22/32
94 ATL 22	10.5	240	9 3/8	17.50	22/32
97 ATL 22	12	250	9 7/8	17.50	22/32
102 ATL 22	12.2	260	10 1/4	17.50	22/32

M+S

RADIAL / RADIAL



## EJES DE TRACCION FOR DRIVE AXLE APPLICATION

CODE CODIGO	SIZE MEDIDA	mm		mm	
		mm	inch	mm	inch
80 BT 19	8	203	8	15.10	19/32
85 BT 19	9	219	8 5/8	15.10	19/32
90 BT 19	10	229	9	15.10	19/32

RADIAL / RADIAL

NOTA: EN CODIGOS SOMBREADOS CONSULTE A SU ASESOR

NOTE: IN COLORED CODES ASK YOUR ADVISOR

- RECOMENDADO
- ACEPTABLE
- LIMITADO

- RECOMMENDED
- ACCEPTABLE
- LIMITED



**BT2**



### EJES DE TRACCION FOR DRIVE AXLE APPLICATION

CODE CODIGO	SIZE MEDIDA	mm		mm	
		mm	inch	mm	inch
80 BT2 26	8A	203	8	20.60	26/32
85 BT2 26	9A	219	8 5/8	20.60	26/32
90 BT2 26	10A	229	9	20.60	26/32

RADIAL / RADIAL

### EJES DE TRACCION FOR DRIVE AXLE APPLICATION

CODE CODIGO	SIZE MEDIDA	mm		mm	
		mm	inch	mm	inch
75 NT2 26	7	194	7 5/8	20.60	26/32
80 NT2 26	8	203	8	20.60	26/32
85 NT2 26	9	219	8 5/8	20.60	26/32

M+S

RADIAL / RADIAL

### EJES DE TRACCION FOR DRIVE AXLE APPLICATION

CODE CODIGO	SIZE MEDIDA	mm		mm	
		mm	inch	mm	inch
97 WD 24	12	250	9 7/8	19.00	24/32
102 WD 24	12.2	260	10 1/4	19.00	24/32
105 WD 24	12.6	270	10 5/8	19.00	24/32

M+S

RADIAL / RADIAL



**NT2**



**WD**



NOTA: EN CODIGOS SOMBREADADOS CONSULTE A SU ASESOR

NOTE: IN COLORED CODES ASK YOUR ADVISOR

- RECOMENDADO
- ACEPTABLE
- LIMITADO

- RECOMMENDED
- ACCEPTABLE
- LIMITED

# REGIONAL



- RECOMENDADO
- ACEPTABLE
- LIMITADO

# REGIONAL

## EJES DE TRACCION FOR DRIVE AXLE APPLICATION

CODE CODIGO	SIZE MEDIDA	mm		mm	
		mm	inch	mm	inch
85 WE 24	9	219	8 5/8	19.00	24/32
90 WE 24	10	229	9	19.00	24/32
97 WE 24	12	250	9 7/8	19.00	24/32
102 WE 24	12.2	260	10 1/4	19.00	24/32
107 WE 24	12.6	275	10 7/8	19.00	24/32

M+S

RADIAL / RADIAL

## EJES DE TRACCION FOR DRIVE AXLE APPLICATION

CODE CODIGO	SIZE MEDIDA	mm		mm	
		mm	inch	mm	inch
80 GRIP L17	8A	203	8	13.50	17/32
85 GRIP L17	9A	219	8 5/8	13.50	17/32
70 GRIP 22	6	178	7	17.50	22/32
75 GRIP 22	7	194	7 5/8	17.50	22/32
80 GRIP 22	8	203	8	17.50	22/32
85 GRIP 22	9	219	8 5/8	17.50	22/32

M+S

RADIAL / RADIAL

## EJES DE TRACCION FOR DRIVE AXLE APPLICATION

CODE CODIGO	SIZE MEDIDA	mm		mm	
		mm	inch	mm	inch
80 MTM2 26	8	203	8	20.60	26/32
85 MTM2 26	9	219	8 5/8	20.60	26/32
90 MTM2 26	10	229	9	20.60	26/32
94 MTM2 26	10.5	241	9 1/2	20.60	26/32
97 MTM2 26	12	250	9 7/8	20.60	26/32

M+S

RADIAL / RADIAL

NOTA: EN CODIGOS SOMBREADOS CONSULTE A SU ASESOR

NOTE: IN COLORED CODES ASK YOUR ADVISOR

- RECOMMENDED
- ACCEPTABLE
- LIMITED

# REGIONAL



# REGIONAL



**MTM3**



.....



.....

.....

.....

.....

.....



**BR**



.....

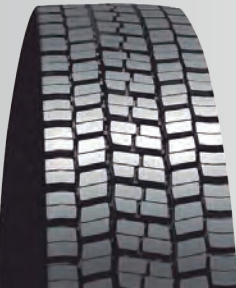


.....

.....

.....

.....



**BTM2**



.....



.....

.....

.....



.....

.....

.....

## EJES DE TRACCION FOR DRIVE AXLE APPLICATION

CODE CODIGO	SIZE MEDIDA	mm		inch	
		mm	inch	mm	inch
82 MTM3 26	8.2	210	8 1/4	20.60	26/32
85 MTM3 26	9	219	8 5/8	20.60	26/32
90 MTM3 26	10	229	9	20.60	26/32

M+S

RADIAL / RADIAL

## EJES DE TRACCION FOR DRIVE AXLE APPLICATION

CODE CODIGO	SIZE MEDIDA	mm		inch	
		mm	inch	mm	inch
70 BR 16	6	178	7	12.70	16/32
76 BR 17	7.5	197	7 3/4	13.50	17/32
80 BR 17	8	203	8	13.50	17/32
92 BR 18	10.5	235	9 1/4	14.30	18/32

RADIAL / RADIAL

## EJES DE TRACCION FOR DRIVE AXLE APPLICATION

CODE CODIGO	SIZE MEDIDA	mm		inch	
		mm	inch	mm	inch
103 BTM2-23	12.3	264	10 3/8	18.50	23/32
107 BTM2-23	12.7	275	10 7/8	18.50	23/32

M+S

RADIAL / RADIAL

NOTA: EN CODIGOS SOMBREADOS CONSULTE A SU ASESOR

NOTE: IN COLORED CODES ASK YOUR ADVISOR

..... RECOMENDADO  
 .... ACEPTABLE  
 .... LIMITADO

..... RECOMMENDED  
 .... ACCEPTABLE  
 .... LIMITED

# REGIONAL



# REGIONAL

## EJES DE TRACCION FOR DRIVE AXLE APPLICATION

CODE CODIGO	SIZE MEDIDA	mm		inch	
		mm	inch	mm	inch
80 GT 18	8	203	8	14.30	18/32
85 GT 18	9	219	8 5/8	14.30	18/32

RADIAL / RADIAL

## EJES DE TRACCION FOR DRIVE AXLE APPLICATION

CODE CODIGO	SIZE MEDIDA	mm		inch	
		mm	inch	mm	inch
77 PR 26	7.7	200	7 7/8	20.60	26/32
82 PR 26	8.2	210	8 1/4	20.60	26/32
85 PR 26	9	220	8 5/8	20.60	26/32
97 PR 26	12	250	9 7/8	20.60	26/32

RADIAL / RADIAL

## EJES DE TRACCION FOR DRIVE AXLE APPLICATION

CODE CODIGO	SIZE MEDIDA	mm		inch	
		mm	inch	mm	inch
90 DY 21	10	230	9	17.00	21/32
94 DY 21	10.5	240	9 3/8	17.00	21/32
85 DY 23	9A	220	8 5/8	18.00	23/32
97 DY 26	12B	250	9 7/8	21.00	26/32

M+S

RADIAL / RADIAL



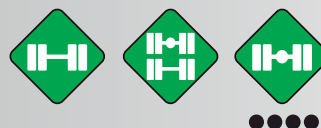
GT



PR



DY



NOTA: EN CODIGOS SOMBREADOS CONSULTE A SU ASESOR

NOTE: IN COLORED CODES ASK YOUR ADVISOR

- RECOMENDADO
- ACEPTABLE
- LIMITADO

- RECOMMENDED
- ACCEPTABLE
- LIMITED



# REGIONAL



## EJES DE TRACCION FOR DRIVE AXLE APPLICATION

CODE CODIGO	SIZE MEDIDA	mm		inch	
		mm	inch	mm	inch
75 DL 22	7	194	7 5/8	17.50	22/32
80 DL 22	8	203	8	17.50	22/32
82 DL 22	8.2	210	8 1/4	17.50	22/32
85 DL 22	9	219	8 5/8	17.50	22/32
90 DL 22	10	229	9	17.50	22/32

RADIAL / RADIAL

# URBANO



# METRO CITY

## EJES DE TRACCION FOR DRIVE AXLE APPLICATION

CODE CODIGO	SIZE MEDIDA	mm		inch	
		mm	inch	mm	inch
64 DL1 21	4.5	165	6 1/2	17.00	21/32
67 DL1 21	5.5	175	6 7/8	17.00	21/32

RADIAL / RADIAL



## EJES DE TRACCION FOR DRIVE AXLE APPLICATION

CODE CODIGO	SIZE MEDIDA	mm		inch	
		mm	inch	mm	inch
97 AS 24	12	250	9 7/8	19.00	24/32
102 AS 24	12.2	260	10 1/4	19.00	24/32

M+S

RADIAL / RADIAL

NOTA: EN CODIGOS SOMBREADOS CONSULTE A SU ASESOR

NOTE: IN COLORED CODES ASK YOUR ADVISOR

- RECOMENDADO
- ACEPTABLE
- LIMITADO

- RECOMMENDED
- ACCEPTABLE
- LIMITED



### EJES LIBRES Y DE TRACCION FOR DRIVE AND FREE AXLE APPLICATION

CODE CODIGO	SIZE MEDIDA	mm		mm	
		mm	inch	mm	inch
54 S 14	2.5	138	5 1/2	11.10	14/32
56 S 14	3.5	146	5 3/4	11.10	14/32
75 S 15	7	194	7 5/8	11.90	15/32
80 S 15	8	203	8	11.90	15/32
85 S 15	9	219	8 5/8	11.90	15/32

RADIAL / RADIAL • DIAGONAL / BIAS PLY



### EJES LIBRES Y DE TRACCION FOR DRIVE AND FREE AXLE APPLICATION

CODE CODIGO	SIZE MEDIDA	mm		mm	
		mm	inch	mm	inch
94 BUB 22	10.7	240	9 1/2	17.50	22/32
97 BUB 22	12	250	9 7/8	17.50	22/32

RADIAL / RADIAL



### EJES LIBRES Y DE TRACCION FOR DRIVE AND FREE AXLE APPLICATION

CODE CODIGO	SIZE MEDIDA	mm		mm	
		mm	inch	mm	inch
85 ZA 19	9	219	8 5/8	15.10	19/32

RADIAL / RADIAL • DIAGONAL / BIAS PLY

NOTA: EN CODIGOS SOMBREADOS CONSULTE A SU ASESOR

NOTE: IN COLORED CODES ASK YOUR ADVISOR

- RECOMENDADO
- ACEPTABLE
- LIMITADO

- RECOMMENDED
- ACCEPTABLE
- LIMITED



**GC**



**GC1**



**WHR**



- RECOMENDADO
- ACEPTABLE
- LIMITADO

NOTA: EN CODIGOS SOMBREADOS CONSULTE A SU ASESOR

NOTE: IN COLORED CODES ASK YOUR ADVISOR

- RECOMMENDED
- ACCEPTABLE
- LIMITED

**EJES LIBRES Y DE TRACCION**  
FOR DRIVE AND FREE AXLE APPLICATION

CODE CODIGO	SIZE MEDIDA	mm		inch	
		mm	inch	mm	inch
60 GC 14	4	152	6	11.10	14/32

RADIAL / RADIAL • DIAGONAL / BIAS PLY

**EJES LIBRES Y DE TRACCION**  
FOR DRIVE AND FREE AXLE APPLICATION

CODE CODIGO	SIZE MEDIDA	mm		inch	
		mm	inch	mm	inch
70 GC1 18	6	178	7	14.30	18/32
74 GC1 18	6.4	190	7 1/2	14.30	18/32
77 GC1 18	7.7	200	7 7/8	14.30	18/32
81 GC1 18	8.1	208	8 1/4	14.30	18/32
85 GC1 18	9	220	8 5/8	14.30	18/32

RADIAL / RADIAL • DIAGONAL / BIAS PLY

**EJES LIBRES Y DE TRACCION**  
FOR DRIVE AND FREE AXLE APPLICATION

CODE CODIGO	SIZE MEDIDA	mm		inch	
		mm	inch	mm	inch
75 WHR 24	7	194	7 5/8	19.00	24/32
80 WHR 24	8	203	8	19.00	24/32
85 WHR 24	9	219	8 5/8	19.00	24/32
92 WHR 24	10.5	235	9 1/4	19.00	24/32
97 WHR 24	12	250	9 7/8	19.00	24/32
103 WHR 24	14	263	10 3/8	19.00	24/32

RADIAL / RADIAL



**CR**



**DDE66**



**B51**



## EJES LIBRES Y DE TRACCION FOR DRIVE AND FREE AXLE APPLICATION

CODE CODIGO	SIZE MEDIDA	mm		mm	
		mm	inch	mm	inch
75 CR 16	7	194	7 5/8	12.70	16/32
80 CR 18	8	203	8	14.30	18/32
92 CR 18	10.5	235	9 1/4	14.30	18/32
100 CR 18	12	254	10	14.30	18/32
104 CR 18	12.5	267	10 1/2	14.30	18/32
75 CR 19	7A	194	7 5/8	15.10	19/32
85 CR 19	9A	219	8 5/8	15.10	19/32

RADIAL / RADIAL • DIAGONAL / BIAS PLY

## EJES DE TRACCION FOR DRIVE AXLE APPLICATION

CODE CODIGO	SIZE MEDIDA	mm		mm	
		mm	inch	mm	inch
81 DDE66 13	8.1	208	8 1/8	10.60	13/32
84 DDE66 13	8.5	217	8 1/2	10.60	13/32

RADIAL / RADIAL • DIAGONAL / BIAS PLY

## EJES DE TRACCION FOR DRIVE AXLE APPLICATION

CODE CODIGO	SIZE MEDIDA	mm		mm	
		mm	inch	mm	inc
97 B51 23	12	250	9 7/8	18.00	23/32

M+S

RADIAL / RADIAL

NOTA: EN CODIGOS SOMBREADOS CONSULTE A SU ASESOR

NOTE: IN COLORED CODES ASK YOUR ADVISOR

- RECOMENDADO
- ACEPTABLE
- LIMITADO

- RECOMMENDED
- ACCEPTABLE
- LIMITED



**B43**



**BAR**



**UM**



### EJES DE TRACCION FOR DRIVE AXLE APPLICATION

CODE CODIGO	SIZE MEDIDA	mm		mm	
		mm	inch	mm	inch
90 B43-20	9	230	9	17.00	20/32
94 B43-20	10	240	9 1/2	17.00	20/32

M+S

RADIAL / RADIAL

### EJES DE TRACCION FOR DRIVE AXLE APPLICATION

CODE CODIGO	SIZE MEDIDA	mm		mm	
		mm	inch	mm	inch
51 BAR 12	2	130	5 1/8	9.50	12/32
55 BAR 12	3	143	5 5/8	9.50	12/32
61 BAR 12	4	156	6 1/8	9.50	12/32
64 BAR 12	4.5	165	6 1/2	9.50	12/32

RADIAL / RADIAL

### EJES DE TRACCION FOR DRIVE AXLE APPLICATION

CODE CODIGO	SIZE MEDIDA	mm		mm	
		mm	inch	mm	inch
74 UM 16	6.5	190	7 1/2	13.00	16/32
85 UM 23	19	220	8 5/8	18.00	23/32
94 UM 23	10	240	9 1/2	18.00	23/32
97 UM 23	12	250	9 7/8	18.00	23/32
102 UM 23	12.2	260	10 1/4	18.00	23/32

RADIAL / RADIAL

NOTA: EN CODIGOS SOMBREADOS CONSULTE A SU ASESOR

NOTE: IN COLORED CODES ASK YOUR ADVISOR

- RECOMENDADO
- ACEPTABLE
- LIMITADO

- RECOMMENDED
- ACCEPTABLE
- LIMITED



EJES DE TRACCION  
FOR DRIVE AXLE APPLICATION

CODE CODIGO	SIZE MEDIDA	mm		mm	
		mm	inch	mm	inch
70 UHS 16	6	180	7	13.00	16/32
74 UHS 16	6.5	190	7 1/2	13.00	16/32

RADIAL / RADIAL



EJES DE TRACCION  
FOR DRIVE AXLE APPLICATION

CODE CODIGO	SIZE MEDIDA	mm		mm	
		mm	inch	mm	inch
80 WT 26	8	203	8	20.60	26/32
85 WT 26	9	219	8 5/8	20.60	26/32

M+S

RADIAL / RADIAL



EJES DE TRACCION  
FOR DRIVE AXLE APPLICATION

CODE CODIGO	SIZE MEDIDA	mm		mm	
		mm	inch	mm	inch
82 WM 26	8.2	210	8 1/4	20.50	26/32
85 WM 26	9	219	8 5/8	20.50	26/32
90 WM 26	10	230	9	20.50	26/32
94 WM 26	10.5	241	9 1/2	20.50	26/32

RADIAL / RADIAL

NOTA: EN CODIGOS SOMBREADOS CONSULTE A SU ASESOR

NOTE: IN COLORED CODES ASK YOUR ADVISOR

- RECOMENDADO
- ACEPTABLE
- LIMITADO

- RECOMMENDED
- ACCEPTABLE
- LIMITED



**ZY2**



### EJES DE TRACCION FOR DRIVE AXLE APPLICATION

CODE CODIGO	SIZE MEDIDA	mm		mm	
		mm	inch	mm	inch
85 ZY2 22	9	219	8 5/8	17.50	22/32
90 ZY2 22	10	229	9	17.50	22/32
94 ZY2 22	10.5	240	9 1/2	17.00	22/32
97 ZY2 22	12	250	9 7/8	17.50	22/32
102 ZY2 22	12.2	260	10 1/4	17.50	22/32

RADIAL / RADIAL



**WW**



### EJES DE TRACCION FOR DRIVE AXLE APPLICATION

CODE CODIGO	SIZE MEDIDA	mm		mm	
		mm	inch	mm	inch
130 WW 18	15A	330	13	14.30	18/32
142 WW 21	16.2	362	14 1/4	16.70	21/32

RADIAL / RADIAL



**BZU3**



### EJES DE TRACCION FOR DRIVE AXLE APPLICATION

CODE CODIGO	SIZE MEDIDA	mm		mm	
		mm	inch	mm	inch
94 BZU3 22	10.5	240	9 3/8	17.50	22/32
102 BZU3 22	12.2	260	10 1/4	17.50	22/32

M+S

RADIAL / RADIAL

NOTA: EN CODIGOS SOMBREADOS CONSULTE A SU ASESOR

NOTE: IN COLORED CODES ASK YOUR ADVISOR

- RECOMENDADO
- ACCEPTABLE
- LIMITADO

- RECOMMENDED
- ACCEPTABLE
- LIMITED

# URBANO

# METRO CITY



LPD



## EJES DE TRACCION FOR DRIVE AXLE APPLICATION

CODE CODIGO	SIZE MEDIDA	mm		mm	
		mm	inch	mm	inch
97 LPD 21	12	250	9 7/8	17.00	21/32
102 LPD 21	12.2	260	10 1/4	17.00	21/32
105 LPD 21	12.6	270	10 5/8	17.00	21/32

M+S

RADIAL / RADIAL

# MIXTO

# ON / OFF ROAD



TC



## EJES DE TRACCION FOR DRIVE AXLE APPLICATION

CODE CODIGO	SIZE MEDIDA	mm		mm	
		mm	inch	mm	inch
52 TC 14	2	133	5 1/4	11.10	14/32
54 TC 14	2.5	140	5 1/2	11.10	14/32
56 TC 14	3	146	5 3/4	11.10	14/32
60 TC 14	4	152	6	11.10	14/32
65 TC 15	5	168	6 5/8	11.90	15/32
70 TC 15	6	179	7	11.90	15/32
75 TC 20	7	194	7 5/8	15.90	20/32
80 TC 20	8	203	8	15.90	20/32
85 TC 20	9	219	8 5/8	15.90	20/32

RADIAL / RADIAL • DIAGONAL / BIAS PLY



LT



## MULTITRACCION MULTITRACCION

CODE CODIGO	SIZE MEDIDA	mm		mm	
		mm	inch	mm	inch
80 LT 15	8	203	8	11.90	15/32
84 LT 15	8.5	216	8 1/2	11.90	15/32

M+S

RADIAL / RADIAL

NOTA: EN CODIGOS SOMBREADOS CONSULTE A SU ASESOR

NOTE: IN COLORED CODES ASK YOUR ADVISOR

- RECOMENDADO
- ACEPTABLE
- LIMITADO

- RECOMMENDED
- ACCEPTABLE
- LIMITED





### EJES DE TRACCION FOR DRIVE AXLE APPLICATION

CODE CODIGO	SIZE MEDIDA	mm		mm	
		mm	inch	mm	inch
55 CROSS 15	3	143	5 5/8	11.90	15/32
60 CROSS 15	4	152	6	12.00	15/32
65 CROSS 15	5	168	6 5/8	11.90	15/32
70 CROSS 20	6	178	7	15.90	20/32
75 CROSS 20	7	194	7 5/8	15.90	20/32
85 CROSS 20	9	220	8 5/8	16.00	20/32

RADIAL / RADIAL • DIAGONAL / BIAS PLY

### EJES DE TRACCION FOR DRIVE AXLE APPLICATION

CODE CODIGO	SIZE MEDIDA	mm		mm	
		mm	inch	mm	inch
60 CROSS1 20	4	152	6	16.00	20/32
65 CROSS1 20	5	168	6 5/8	16.00	20/32
80 CROSS1 20	8	203	8	16.00	20/32

RADIAL / RADIAL • DIAGONAL / BIAS PLY

### EJES DE TRACCION FOR DRIVE AXLE APPLICATION

CODE CODIGO	SIZE MEDIDA	mm		mm	
		mm	inch	mm	inch
70 LL 20	6	178	7	15.90	20/32
74 LL 20	6.5	190	7 1/2	15.90	20/32
75 LL 24	7A	194	7 5/8	19.00	24/32
80 LL 24	8A	203	8	19.00	24/32
85 LL 24	9A	219	8 5/8	19.00	24/32
95 LL 24	11A	244	9 5/8	19.00	24/32

RADIAL / RADIAL • DIAGONAL / BIAS PLY

NOTA: EN CODIGOS SOMBREADOS CONSULTE A SU ASESOR

NOTE: IN COLORED CODES ASK YOUR ADVISOR

- RECOMENDADO
- ACEPTABLE
- LIMITADO

- RECOMMENDED
- ACCEPTABLE
- LIMITED

# MIXTO

# ON / OFF ROAD



**MLZ**



**WH**



**WB**



## EJES DE TRACCION FOR DRIVE AXLE APPLICATION

CODE CODIGO	SIZE MEDIDA	mm		mm	
		mm	inch	mm	inch
85 MLZ 29	9	219	8 5/8	23.00	29/32

RADIAL / RADIAL • DIAGONAL / BIAS PLY

## EJES DE TRACCION FOR DRIVE AXLE APPLICATION

CODE CODIGO	SIZE MEDIDA	mm		mm	
		mm	inch	mm	inch
80 WH 26	8	203	8	20.60	26/32
84 WH 26	8.5	216	8 1/2	20.60	26/32
90 WH 26	10	229	9	20.60	26/32
94 WH 26	10.5	241	9 1/2	20.60	26/32
97 WH 26	12	250	9 7/8	20.60	26/32

RADIAL / RADIAL • DIAGONAL / BIAS PLY  
M+S

## EJES DE TRACCION FOR DRIVE AXLE APPLICATION

CODE CODIGO	SIZE MEDIDA	mm		mm	
		mm	inch	mm	inch
112 WB 21	13.5	286	11 1/4	16.70	21/32
127 WB 21	14.5	327	12 7/8	16.70	21/32

RADIAL / RADIAL

NOTA: EN CODIGOS SOMBREADOS CONSULTE A SU ASESOR

NOTE: IN COLORED CODES ASK YOUR ADVISOR

- RECOMENDADO
- ACEPTABLE
- LIMITADO

- RECOMMENDED
- ACCEPTABLE
- LIMITED

# FUERA DE CARRETERA

# OFF ROAD



**WBL**



**FRP**



**ML**



## EJES DE TRACCION FOR DRIVE AXLE APPLICATION

CODE CODIGO	SIZE MEDIDA	mm		mm	
		mm	inch	mm	inch
142 WBL 30	16.2	362	14 1/4	24.00	30/32

M+S

RADIAL / RADIAL

## EJES DE TRACCION FOR DRIVE AXLE APPLICATION

CODE CODIGO	SIZE MEDIDA	mm		mm	
		mm	inch	mm	inch
80 FRP 22	8	203	8	17.5	22/32
82 FRP 22	8.2	210	8 1/4	17.5	22/32

RADIAL / RADIAL • DIAGONAL / BIAS PLY

## EJES DE TRACCION FOR DRIVE AXLE APPLICATION

CODE CODIGO	SIZE MEDIDA	mm		mm	
		mm	inch	mm	inch
85 ML 22	9	219	8 5/8	17.5	22/32
80 ML 28	8	203	8	22.20	28/32
85 ML 28	9	219	8 5/8	22.20	28/32
92 ML 28	10.5	235	9 1/4	22.20	28/32
97 ML 28	12	250	9 7/8	22.20	28/32

RADIAL / RADIAL • DIAGONAL / BIAS PLY

NOTA: EN CODIGOS SOMBREADOS CONSULTE A SU ASESOR

NOTE: IN COLORED CODES ASK YOUR ADVISOR

- RECOMENDADO
- ACEPTABLE
- LIMITADO

- RECOMMENDED
- ACCEPTABLE
- LIMITED

# FUERA DE CARRETERA

# OFF ROAD



**SM**



## EJES DE TRACCION FOR DRIVE AXLE APPLICATION

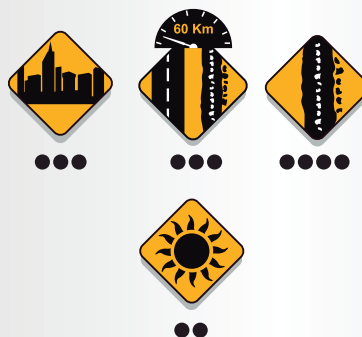
CODE CODIGO	SIZE MEDIDA	mm		mm	
		mm	inch	mm	inch
85 SM 27	9	219	8 5/8	21.00	27/32
90 SM 27	10	230	9	21.00	27/32
107 SM 32	12.7A	276	10 7/8	25.40	32/32

M+S

RADIAL / RADIAL



**LL1**



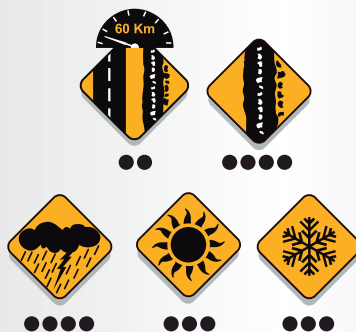
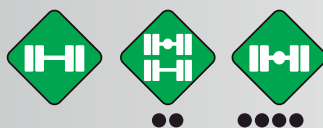
## EJES DE TRACCION FOR DRIVE AXLE APPLICATION

CODE CODIGO	SIZE MEDIDA	mm		mm	
		mm	inch	mm	inch
84 LL1 32	8.5	217	8 1/2	25.00	32/32

RADIAL / RADIAL • DIAGONAL / BIAS PLY



**BCT**



## INDUSTRIAL INDUSTRIAL

CODE CODIGO	SIZE MEDIDA	mm		mm	
		mm	inch	mm	inch
100 BCT 26	12	254	10	20.60	26/32
113 BCT 26	13.6	289	11 3/8	20.60	26/32

RADIAL / RADIAL • DIAGONAL / BIAS PLY

M+S

NOTA: EN CODIGOS SOMBREADOS CONSULTE A SU ASESOR

NOTE: IN COLORED CODES ASK YOUR ADVISOR

- RECOMENDADO
- ACEPTABLE
- LIMITADO

- RECOMMENDED
- ACCEPTABLE
- LIMITED

# FUERA DE CARRETERA

# OFF ROAD



## OTR ( E / L-4 )

CODE CODIGO	SIZE MEDIDA	mm		mm	
		mm	inch	mm	inch
281 OTR 76	852	715.0	28 1/8	60.00	76/32

Para Medidas: 29.5-25, 29.5-29  
For Sizes: 29.5-25, 29.5-29

## OTR



# INDUSTRIAL

# INDUSTRIAL



## INDUSTRIAL INDUSTRIAL

CODE CODIGO	SIZE MEDIDA	mm		mm	
		mm	inch	mm	inch
80 SLICK 18	8	203	8	14.30	18/32

MONTACARGA / FORKLIFT



## SLICK



## MC1



- RECOMENDADO
- ACEPTABLE
- LIMITADO

## INDUSTRIAL INDUSTRIAL

CODE CODIGO	SIZE MEDIDA	mm		mm	
		mm	inch	mm	inch
47 MC1 20	1	123	4 7/8	16.00	20/32
62 MC1 20	4	160	6 1/4	16.00	20/32
51 MC1 26	2	130	5 1/8	20.50	26/32

MONTACARGA / FORKLIFT

NOTA: EN CODIGOS SOMBREADOS CONSULTE A SU ASESOR

NOTE: IN COLORED CODES ASK YOUR ADVISOR

- RECOMMENDED
- ACCEPTABLE
- LIMITED



**S72**



••••



••••

## INDUSTRIAL INDUSTRIAL

CODE CODIGO	SIZE MEDIDA	mm		mm	
		mm	inch	mm	inch
104 S7237	12.5	266	10 1/2	29.00	37/32



**S71**



••••



•••• •••• ••••

## INDUSTRIAL INDUSTRIAL

CODE CODIGO	SIZE MEDIDA	mm		mm	
		mm	inch	mm	inch
115 S71 32	13.5	298	11 5/8	25.00	32/32



**KAJ71**



••••



•••• •••• ••••

## INDUSTRIAL INDUSTRIAL

CODE CODIGO	SIZE MEDIDA	mm		mm	
		mm	inch	mm	inch
95 KAJ71	10	245	9 5/8	23.00	29/32
105 KAJ71 29	12.5	269	10 5/8	23.00	29/32

NOTA: EN CODIGOS SOMBREADOS CONSULTE A SU ASESOR

NOTE: IN COLORED CODES ASK YOUR ADVISOR

- RECOMENDADO
- ACEPTABLE
- LIMITADO

- RECOMMENDED
- ACCEPTABLE
- LIMITED

# INDUSTRIAL

# INDUSTRIAL



**S70**



••••



••••



**S76**



••••



••••



**LDT**



••••



••••



••••

## INDUSTRIAL INDUSTRIAL

CODE CODIGO	SIZE MEDIDA	mm		mm	
		mm	inch	mm	inch
60 S70 22	6	151	6	17.00	22/32
67 S70 25	6.7	176	6 7/8	20.00	25/32
75 S70 30	7.5	194	7 5/8	25.00	30/32
82 S70 30	8.2	203	8 1/4	25.00	30/32

MONTACARGA / FORKLIFT

## INDUSTRIAL INDUSTRIAL

CODE CODIGO	SIZE MEDIDA	mm		mm	
		mm	inch	mm	inch
50 S76 30	5	127	5	24.00	30/32
64 S76 29	6.5	165	6 1/2	23.00	29/32
74 S76 32	7.5	190	7 1/2	25.00	32/32

## EJES DE TRACCION FOR DRIVE AXLE APPLICATION

CODE CODIGO	SIZE MEDIDA	mm		mm	
		mm	inch	mm	inch
126 LDT 30	14.6	324	12 3/4	24.00	30/32

M+S

RADIAL / RADIAL

- RECOMENDADO
- ACEPTABLE
- LIMITADO

NOTA: EN CODIGOS SOMBREADOS CONSULTE A SU ASESOR

NOTE: IN COLORED CODES ASK YOUR ADVISOR

- RECOMMENDED
- ACCEPTABLE
- LIMITED

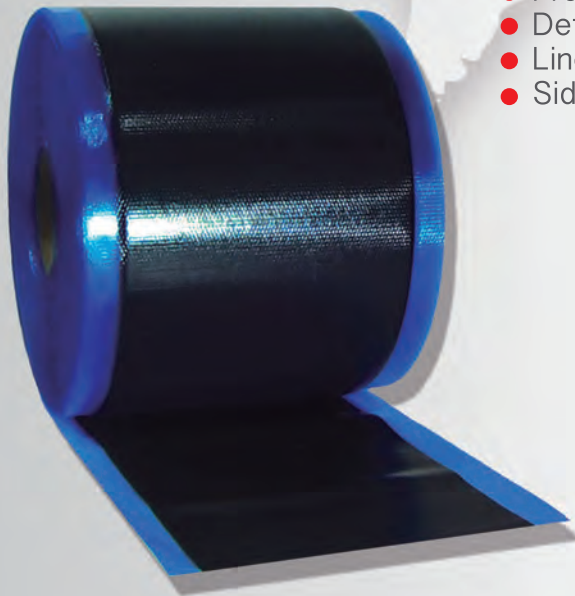
# H.B.plus BANDAMATIC

## PRODUCTS / PRODUCTOS



COMPOUNDING

- Compuestos Especiales de Hule
- Tira Orbitread
- Cojín en Tira A-Z
- Cojín Calandrado
- Mini Extruder
- Solventes
- Cemento
- Pintura de llantas
- Hule piso
- Precurado OTR
- Defensas Marinas
- Línea OTR en tira
- Sidewall



- Rubber Compounds
- Orbitread Strip Rubber
- Strip Cushion Gum
- Cushion Gum
- Cushion Rope
- Cement
- Solvents
- Tire Paint
- OTR Precure Tread
- Dock Fenders
- Rubber Lugs
- Strip OTR line
- Sidewall Veneer





# H.B.plus BANDAMATIC

## CERTIFICATES / CERTIFICADOS

MX15-281  
Folio 13430

**BUREAU VERITAS**  
Certification

**Hules Banda S.A. de C.V.**  
Av. de la Luz No. 80 Parque Industrial La Luz, Cuautitlán Izcalli,  
Edo. de México C.P. 54716, México

This is a multi-site certificate, the sites details are listed in the appendix to this certificate

BVQI Mexicana, S.A. de C.V. certifies that the Management System of the above organisation has been audited and found to be in accordance with the requirements of the standard detailed below

**Standard**  
**NMX-CC-9001-IMNC-2008/ ISO 9001: 2008**  
Exclusions: 7.3, 7.5.2

**Scope of Certification**  
**"The manufacture and sales of products for retread tires, flaps and special rubber compounds."**

Certification cycle start date: **November 19<sup>th</sup>, 2015.**  
Subject to the continued satisfactory operation of the organisation's Management System, this certificate is valid until: **September 15<sup>th</sup>, 2018.**  
Original certification date: **November 21<sup>st</sup>, 2012.** Revision date: **November 19<sup>th</sup>, 2015.**

Certificate number: **MX15-281** Version: **0**

*[Signature]*  
Certification Authority

Local Office:  
**BVQI Mexicana, S.A. de C.V. Av. Ejército Nacional No. 418, 1er Piso,  
Col. Chapultepec Mýrales, Delegación Miguel Hidalgo, C.P. 11570.**

Número de acreditación: 2111  
Fecha de la Acreditación:  
2011-02-26

Further clarifications regarding the scope of this certificate and the applicability of the management system requirements may be obtained by consulting the organisation. To check this accuracy and validity, please send your request to the following email: [bv.contacto@mx.bureauveritas.com](mailto:bv.contacto@mx.bureauveritas.com), include legible scanned copy.

Page 1 of 2

**Intertek**  
Intertek Consumer Goods GmbH  
Königsplatz 120 D-30170 Firth



**Hules Banda S.A. de C.V.**  
Av. De La Luz 80, Parque Ind. La Luz  
CUAUTITLÁN IZCALLI, EDO DE MEXICO  
C.P. 54716 MEXICO

**HB Plus Bandamatic Europe S.L.**  
Las planas 3, parc 13, apdo 17  
E-43350 Les Borges del Camp  
(TERRAGONA) España.

**TEST REPORT No. FUHLO926418 • FUHLO926419 • FUHLO926420**

**TESTING OF A MATERIAL SAMPLE FOR SVHCs LISTED ON 28th of October 2008**  
Arrival in lab: 30.11.2009; processing time: 30.11. - 11.12.2009  
Head of analytical department Umweltschutz/Warenprüfung: Kerstin Schwaner

Sample description: **FRAE091127-21 ITK Mexique-BDC (Unvulcanised Strip Rubber)**  
Sample description: **FRAE091127-22 ITK Mexique-BDC (Unvulcanised Bonding Rubber Sheet)**  
Sample description: **FRAE091127-23 ITK Mexique-BDC (Vulcanised Tread Rubber)**

Nach DIN EN ISO/IEC 17025 durch die  
DACH-Gesellschaft Akkreditierte Chemie GmbH  
Die Akkreditierung gilt für alle in der Urkunde  
benannten Prüfverfahren und Prüfverfahren

Intertek Consumer Goods GmbH, Sitz Firth, Amtsgericht Firth, HRB 5736, Geschäftsführer: Kay Grönhardt, Dr. Jochen P. Zoller

**DACH-Gesellschaft für  
Analytik und  
Prüfung**  
DAC-PL-0031-97-20

Untersuchungsmethode nach  
1.18 des 19. Harmonisierungsabkommens  
und 5.18 des Normenharmonisierungsabkommens

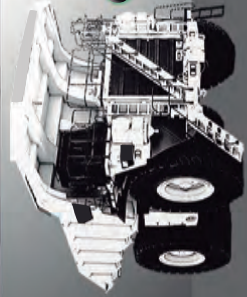


# H.B. plus BANDAMATIC



## OTR

COMPOUND	ACC-3006	GCR-687	OTR-684	OTR-680	OTR-670	OTR-667	OTR-637	GRADER T	SIDE WALL	SHOULDER
<b>MAIN POLYMER CONTENT</b> Natural Synthetic	100 0	80 20	100 0	90 10	50 50	100 0	70 30	10 90	50 50	100 0
<b>PHYSICAL PROPERTIES</b> Tensile Psi Modulus 300% Psi Elongation % Hardness Shore A Specific Gravity Min. Tc90 @ 280 °F	3200 1700 500 66 1.15 40	2900 1200 550 67 1.15 40	2800 1100 550 64 1.14 40	2600 1500 400 80 1.16 40	2500 1100 500 70 1.15 40	2900 1100 500 66 1.13 40	2800 1100 500 66 1.14 40	1900 1100 400 62 1.15 26	2000 400 550 54 1.08 32	2500 900 550 62 1.14 40
<b>MAIN FEATURES</b> Cut Chipping Resistance Aging Resistance Green Tack	Excellent High High	High High Good	Excellent High High	Excellent High High	Good High Good	Excellent High High	High High Good	Good High Good	High Good	High Excellent
<b>FORM</b> Slab Strip Lug	✓ ✓ ✓	✓ ✓ ✓	✓ ✓ ✓	✓ ✓ ✓	✓ ✓ ✓	✓ ✓ ✓	✓ ✓ ✓	✓ ✓ ✓	✓ ✓	Roll
<b>MAIN USE</b> Sculpture Open Steam Mold	✓ ✓ ✓	✓ ✓ ✓	✓ ✓ ✓	✓ ✓ ✓	✓ ✓ ✓	✓ ✓ ✓	✓ ✓ ✓	✓ ✓ ✓	✓ ✓	Roll
<b>TIRE APPLICATIONS</b> Loader Haul Underground Mine Grader	✓ ✓ ✓ ✓	✓ ✓ ✓ ✓	✓ ✓ ✓ ✓	✓ ✓ ✓ ✓	✓ ✓ ✓ ✓	✓ ✓ ✓ ✓	✓ ✓ ✓ ✓	✓ ✓ ✓ ✓	✓ ✓	Roll



**SPECIALLY DESIGNED OTR COMPOUNDS WITH AN OUTSTANDING PERFORMANCE UNDER THE MOST SEVERE TERRAIN CONDITIONS**

Phone: (281)821-9719  
Fax: (281)821-1027  
Toll Free USA 1-866-704-8537

E-mail: [hq@hbplusbandamatic.com](mailto:hq@hbplusbandamatic.com)

[www.hbplusbandamatic.com](http://www.hbplusbandamatic.com)



# OTR

FUERA DE CARRETERA

OFF ROAD



H.B. *plus* BANDAMATIO  
RETREAD RUBBER



OTR ( E / L-4 )

CODE CODIGO	SIZE MEDIDA	mm		mm	
		mm	inch	mm	inch
281 OTR 76	852	715.0	28 1/8	60.00	76/32

Para Medidas: 29.5-25, 29.5-29  
For Sizes: 29.5-25, 29.5-29





# TREAD DESIGNS DISEÑOS DE BANDAS

---

Best Cost per Mile  
El menor Costo por Kilometro .

Av. de la Luz No. 80, Parque Industrial La Luz,  
Cuautitlán Izcalli, **Edo. de Méx.** C.P. 54716  
Tels. ++(5255) 5872-0533 • 5872-2944 • 5872-2964 • 5872-2933  
Fax. ++(5255) 5870-4658 Servicio a clientes: ++(5255) 5870-5109  
01-800-97-58000  
E-mail: [direccion@hulesbanda.com.mx](mailto:direccion@hulesbanda.com.mx)  
E-mail: [ventas@hbplusbandamatic.com](mailto:ventas@hbplusbandamatic.com)

Toll Free USA - MEX 1-888-715-6695

283 Lockhaven Suite # 105  
**Houston TX. 77073**  
Phone: (281) 821-9719 • 821-5562 • 821-2010 • 821-2005  
Fax. (281) 821-1027  
Toll Free USA 1-866-704-8537  
E-mail: [hq@hbplusbandamatic.com](mailto:hq@hbplusbandamatic.com)



HB PLUS BANDAMATIC EUROPE, S.L.  
Urb. Portugal. Carrer San Miquel 52  
E- 43365 Alforja, Tarragona, Spain  
[custserv@hbplusbandamaticeuro.com](mailto:custserv@hbplusbandamaticeuro.com)  
Tel/Fax 00 34 977 054 815  
Logistics Centre in Belgium